

# Sanders & Sanders

ESTATE AGENTS

## HORTON CLOSE ALCESTER WARWICKSHIRE



An opportunity to acquire a modern semi-detached family home located within a cul-de-sac setting and boasting driveway parking for multiple vehicles. Being situated within a highly sought after residential area and having a generously sized rear garden with decked area. The accommodation comprises: Entrance Hall, open-plan lounge and dining areas, kitchen, three bedrooms and bathroom. Rear garage accessed via the side entrance. EPC – C.

**£335,000**

Burton House, High Street, Alcester, Warwickshire, B49 5AB.  
Tel: 01789 766771 E-mail: [alcester@sanders-sanders.co.uk](mailto:alcester@sanders-sanders.co.uk)

Web: [www.sanders-sanders.co.uk](http://www.sanders-sanders.co.uk)

# 26 Horton Close, Alcester, Warwickshire, B49 6LB

## Lounge



## Dining Area



## Kitchen



**Bedroom One**



**Bedroom Three**



**Bathroom**



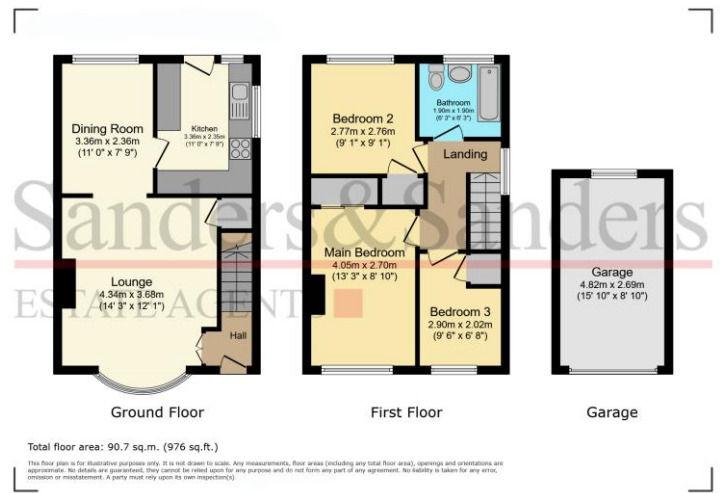
**Bedroom Two**



**Rear Garden and Garage**



**Please note that there is a decked area that would need to be removed to allow access to the garage.**



## Fixtures & Fittings

**Please note that the fixtures & fittings shown on the photographs, contained within these property details, do not form part of a fixtures & fittings list. Some items may/may not be included. You are advised to clarify what items are included before entering into any negotiations.**

## Money Laundering Regulations – Identification Checks

**In line The Money Laundering Regulations 2007, we are duty bound to carry out due diligence on all of our clients to confirm their identity. In line with legal requirements, all purchasers who have an offer accepted on a property marketed by Sanders&Sanders must complete an identification check. To carry out these checks, we work with a specialist third-party provider and a fee of £25 + VAT per purchaser is payable in advance once an offer has been agreed and before we can issue a Memorandum of Sale.**

## Floor Plans & Property Details Disclaimer

**These floor plans are for identification purposes only in relation to where one room is situated to another. They are not to be relied upon in any way for dimensions, scaling, or sq. ft/metres. We will not be held responsible for any loss incurred, due to reliance on these measurements from the floor plans or measurements from the property details. You are advised to confirm all measurements.**