

## JEPHCOTT CLOSE ALCESTER WARWICKSHIRE



An opportunity to acquire a modern detached property being located within a pleasant cul-de-sac setting within walking distance of the renowned Alcester Grammar School. Boasting a sunny aspect rear garden and having accommodation to include: Reception lobby, lounge, dining area with patio doors, kitchen, inner lobby, and downstairs cloakroom. Three bedrooms, en-suite shower room, and bathroom. Driveway parking, fore-garden and integral garage. EPC – D.

**£385,000**

# 6 Jephcott Close, Alcester, Warwickshire, B49 5EJ

## Lounge



## Kitchen



## Dining Room



**Bedroom One**



**Bedroom Two**



**Bedroom Three**



**En-Suite Shower Room**



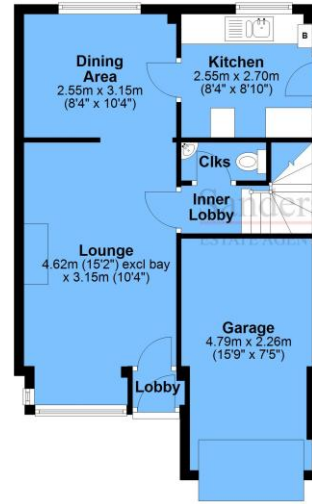
**Bathroom**



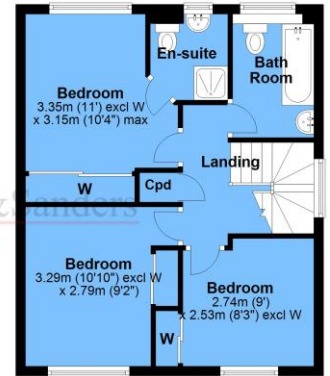
## Rear Garden



**Ground Floor**  
Approx. 51.3 sq. metres (552.3 sq. feet)



**First Floor**  
Approx. 43.4 sq. metres (467.2 sq. feet)



## Fixtures & Fittings

**Please note that the fixtures & fittings shown on the photographs, contained within these property details, do not form part of a fixtures & fittings list. Some items may/may not be included. You are advised to clarify what items are included before entering into any negotiations.**

## Money Laundering Regulations – Identification Checks

**In line The Money Laundering Regulations 2007, we are duty bound to carry out due diligence on all of our clients to confirm their identity. In line with legal requirements, all purchasers who have an offer accepted on a property marketed by Sanders&Sanders must complete an identification check. To carry out these checks, we work with a specialist third-party provider and a fee of £25 + VAT per purchaser is payable in advance once an offer has been agreed and before we can issue a Memorandum of Sale.**

## Floor Plans & Property Details Disclaimer

**These floor plans are for identification purposes only in relation to where one room is situated to another. They are not to be relied upon in any way for dimensions, scaling, or sq. ft/metres. We will not be held responsible for any loss incurred, due to reliance on these measurements from the floor plans or measurements from the property details. You are advised to confirm all measurements.**