

JACKSONS MEADOW BIDFORD-ON-AVON ALCESTER



An imposing semi-detached family home being set over three floors within a highly sought after, small, select, development. Located within easy strolling distance of the delightful open-space Dugdale sports field, small children's play area, countryside walks and the picturesque village of broom with its two renowned public inns.

Boasting a sunny aspect facing rear garden and having generously sized accommodation to include: Reception Hall, lounge, kitchen/Diner with patio doors, utility area and downstairs cloakroom on the ground floor. Two bedrooms and bathroom on the first floor and main bedroom with dressing area and en-suite shower room on the second floor. Tandem driveway parking, fore-garden and detached garage with up and over door and personnel door from the garden.

£375,000

Burton House, High Street, Alcester, Warwickshire, B49 5AB.
Tel: 01789 766771 E-mail: alcester@sanders-sanders.co.uk

Web: www.sanders-sanders.co.uk

16 Jacksons Meadow, Bidford-on-Avon, Alcester, B50 4HQ

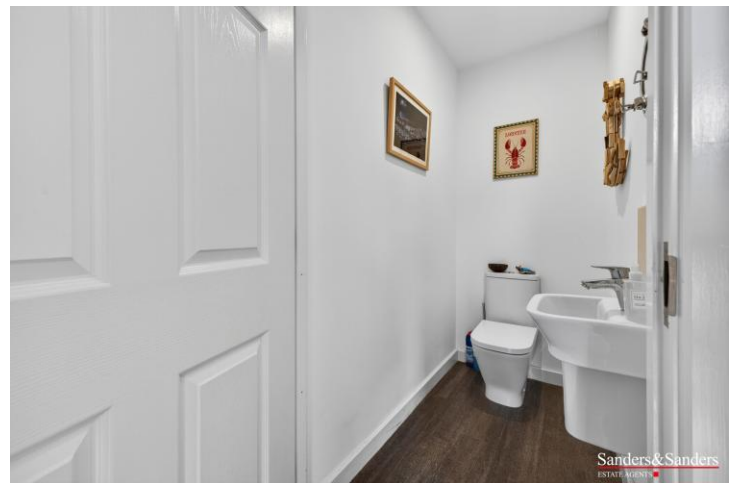
Lounge



Kitchen/Diner



Cloakroom



First Floor Bedroom Two



Second Floor Bedroom One



Bedroom Three



En-Suite Shower Room



Bathroom



Sunny Aspect Rear Garden





Drone Location Shot



Open-Space Service Charge

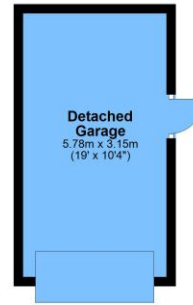
There is an annual open-space service charge and the amount payable for this year was £243.19 (this may be subject to change).

Floor Plans & Property Details Disclaimer

These floor plans are for identification purposes only in relation to where one room is situated to another. They are not to be relied upon in any way for dimensions, scaling or sq. ft/metres. We will not be held responsible for any loss incurred, due to reliance on these measurements from the floor plans or measurements from the property details. You are advised to confirm all measurements.

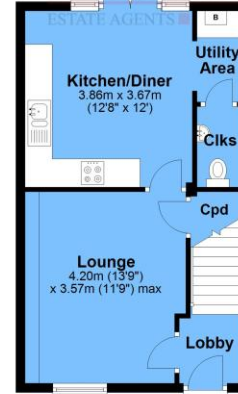
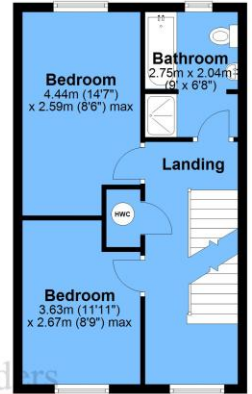
Ground Floor (including garage)

Approx. 56.9 sq. metres (612.3 sq. feet)



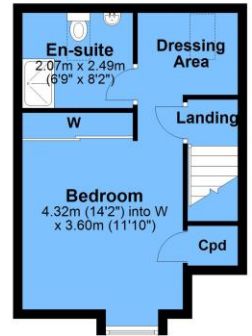
First Floor

Approx. 38.6 sq. metres (415.6 sq. feet)



Second Floor

Approx. 30.1 sq. metres (323.7 sq. feet)



Fixtures & Fittings

Please note that the fixtures & fittings shown on the photographs, contained within these property details, do not form part of a fixtures & fittings list. Some items may/may not be included. You are advised to clarify what items are included before entering into any negotiations.

Money Laundering Regulations – Identification Checks

In line The Money Laundering Regulations 2007, we are duty bound to carry out due diligence on all of our clients to confirm their identity. In line with legal requirements, all purchasers who have an offer accepted on a property marketed by Sanders&Sanders must complete an identification check. To carry out these checks, we work with a specialist third-party provider and a fee of £25 + VAT per purchaser is payable in advance once an offer has been agreed and before we can issue a Memorandum of Sale.