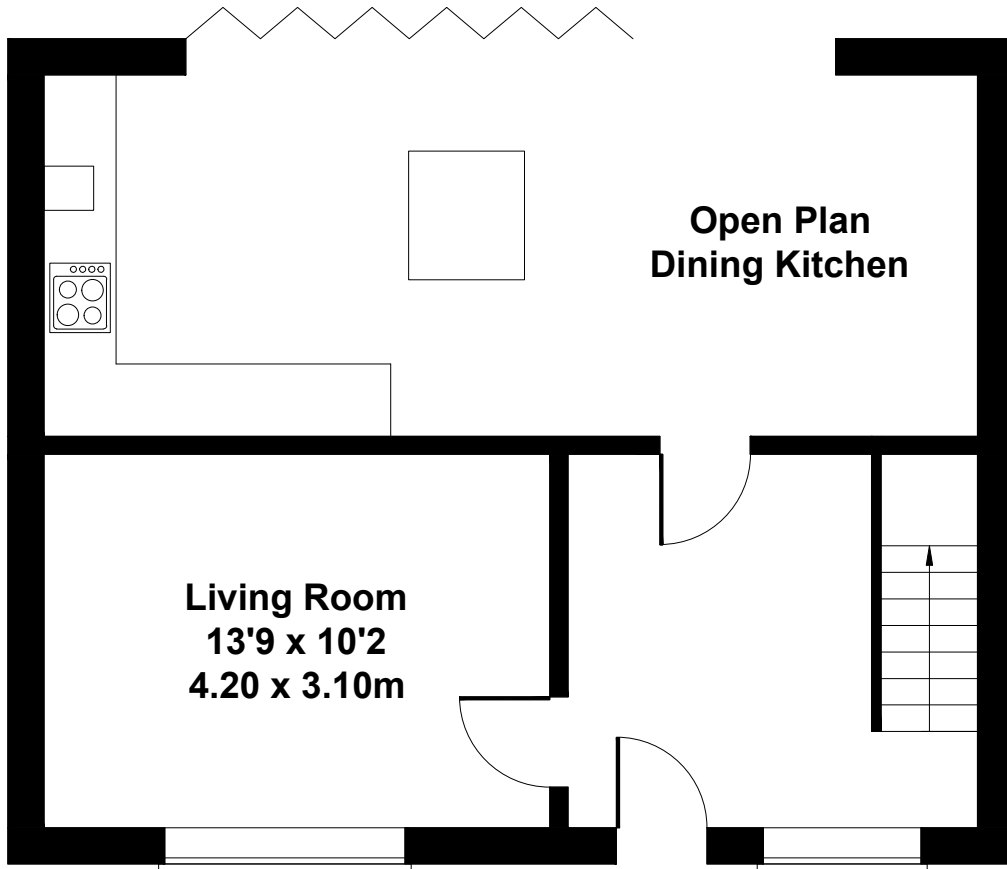


# 134 Robinswood Road

Approximate Gross Internal Area  
1044 sq ft - 97 sq m

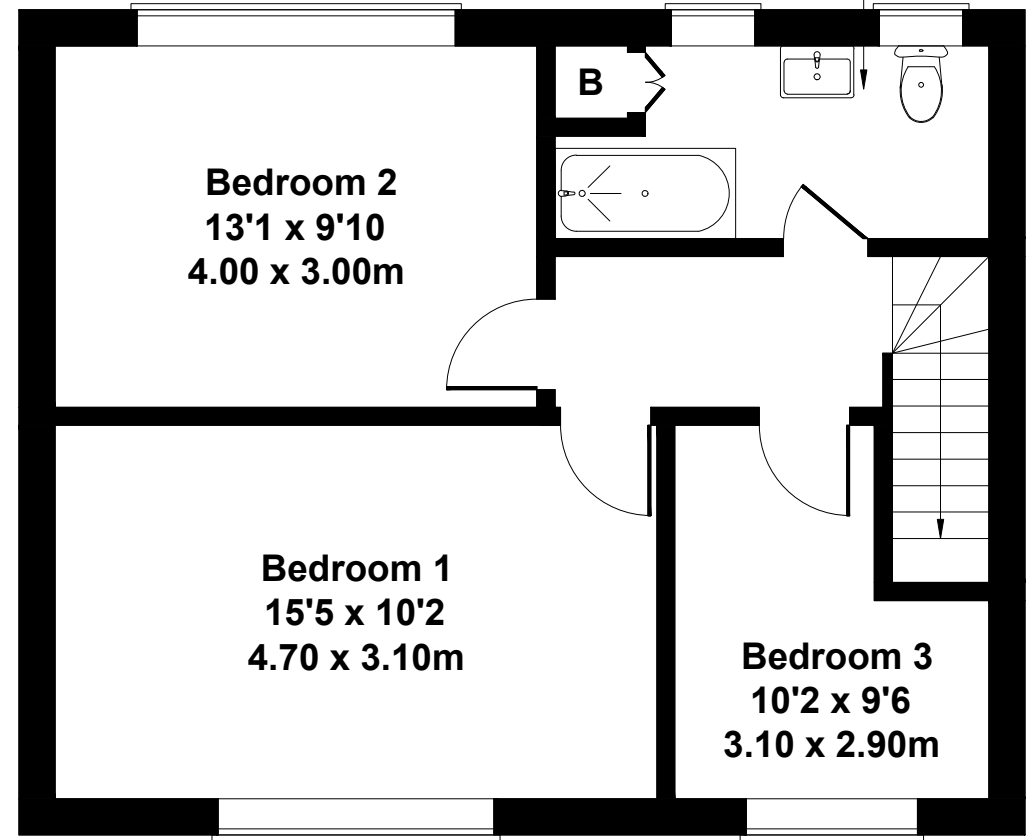
Family Bathroom  
10'2 x 5'3  
3.10 x 1.60m



Open Plan  
Dining Kitchen

Living Room  
13'9 x 10'2  
4.20 x 3.10m

**GROUND FLOOR**



Bedroom 2  
13'1 x 9'10  
4.00 x 3.00m

Bedroom 1  
15'5 x 10'2  
4.70 x 3.10m

Bedroom 3  
10'2 x 9'6  
3.10 x 2.90m

**FIRST FLOOR**

Not to Scale. Produced by The Plan Portal 2026  
For Illustrative Purposes Only.