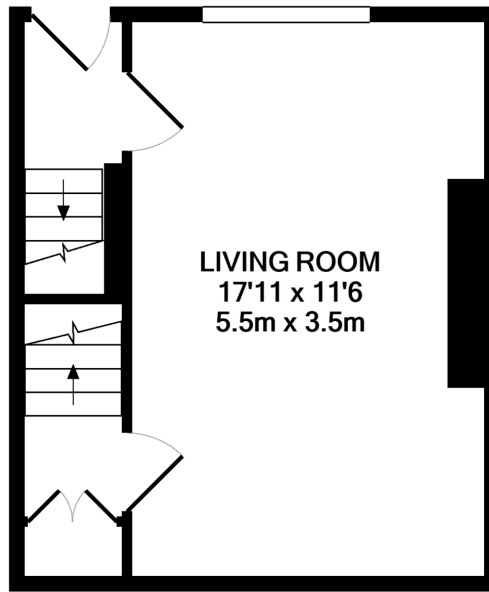


LOWER GROUND FLOOR
APPROX. FLOOR
AREA 260 SQ.FT.
(24.2 SQ.M.)

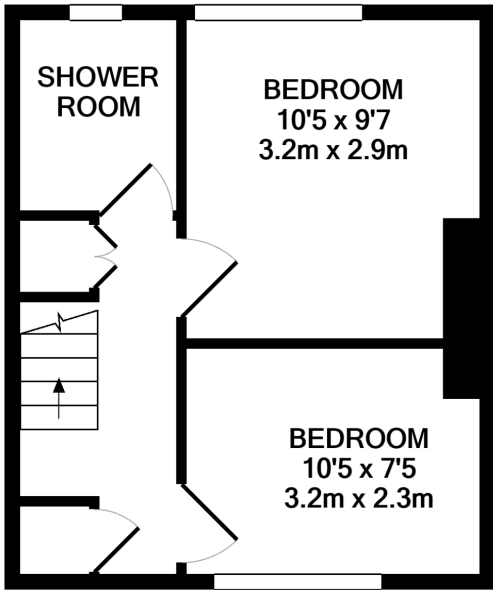


GROUND FLOOR
APPROX. FLOOR
AREA 255 SQ.FT.
(23.7 SQ.M.)

TOTAL APPROX. FLOOR AREA 774 SQ.FT. (71.9 SQ.M.)

Whilst every attempt has been made to ensure the accuracy of the floor plan contained here, measurements of doors, windows, rooms and any other items are approximate and no responsibility is taken for any error, omission, or mis-statement. This plan is for illustrative purposes only and should be used as such by any prospective purchaser. The services, systems and appliances shown have not been tested and no guarantee as to their operability or efficiency can be given

Made with Metropix ©2021



1ST FLOOR
APPROX. FLOOR
AREA 259 SQ.FT.
(24.1 SQ.M.)